



Electrolux
PROFESSIONAL

Handling System for Rack Type Drive Unit with Legs, Tray Unload and Cord Conveyor

ITEM # _____

MODEL # _____

NAME # _____

SIS # _____

AIA # _____



865131 (HSCCTDTU)

Drive Unit of cord conveyor
for trays with tray unloader,
variable speed and legs

Short Form Specification

Item No. _____

Constructed in 304 AISI stainless steel. Two cords in 15mm reinforced polyurethane. Square 40x40mm tubular legs on height-adjustable feet. Variable speed. Start/stop device and emergency switch. Tray unloader and sensors for tray lowerators. Designed for trays up to 375x530mm.

Main Features

- Range allows a large number of conveyor combinations.
- Hidden screws eliminate dirt traps.
- Frontal access for easy maintenance.
- Frame integrated motor for easier cleaning of floor.
- Conveyor speed controlled 4 to 15 m/min depending on capacity.
- Available as optional accessory a remote easy-to reach emergency-stop buttons fitted where required.
- Straight Drive Unit sustain up to 20 m; with each additional 90° curve the capability decreases by 4 m. For longer distances Central Units are needed.

Construction

- 304 AISI stainless steel construction throughout.
- Free-standing construction delivered with 40x40mm legs.
- Thick welded flanges for sturdy connection between the units.
- For trays up to 375x530mm.
- All surfaces smooth with polished finish.
- Stainless steel square 40x40mm tubular legs.
- Fiber glass reinforcement with 15mm polyurethane cord.
- Main electrical controls protected in a water-resistant electrical cabinet.
- Optional step by step loading for maximum accumulation of trays on the conveyor.

Optional Accessories

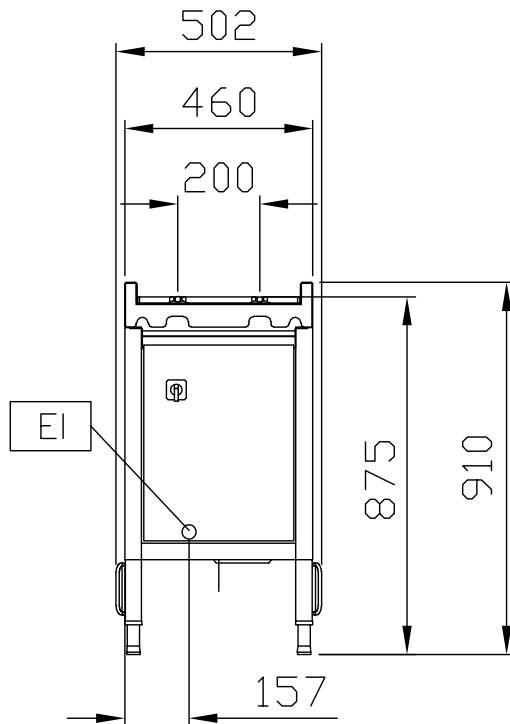
- Tray Lowerator for conveyor, H=800/900 mm PNC 865135 ☐
- Emergency switch for cord conveyor PNC 865141 ☐
- Kit for cord welding PNC 865143 ☐

APPROVAL: _____

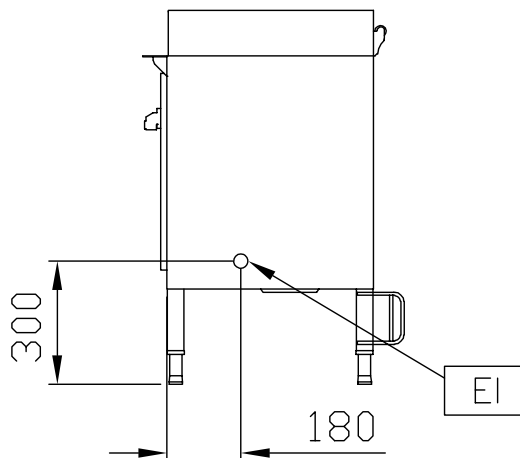


Experience the Excellence
www.electroluxprofessional.com

Front

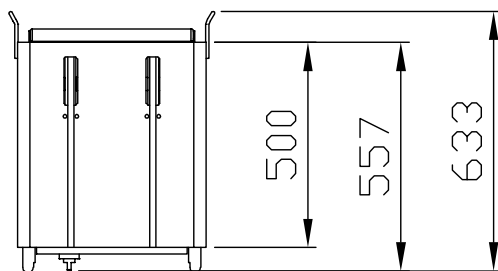


Side



EI = Electrical inlet (power)

Top



Electric

| | |
|-----------------------|----------------------|
| Supply voltage: | 230 V/1N ph/50/60 Hz |
| Electrical power max: | 0.75 kW |

Key Information:

| | |
|------------------------------|--------------------------------------|
| External dimensions, Width: | 500 mm |
| External dimensions, Depth: | 460 mm |
| External dimensions, Height: | 910 mm |
| Net weight: | 49 kg |
| Basin material: | Stainless Steel AISI 304 - EN 1.4301 |
| Feeding motors number: | 1 |
| Number of speeds: | Variable |
| Max. speed: | 15 m/min |
| Min. speed - m/min: | 7 m/min |